

# Hydraulic Gear Pump Model GP-F0

## Technical Data

Model GP-F0 is an all aluminium construction, high pressure Mini Hydraulic Gear Pump with 12 displacement sizes from 0.09 to 0.120 cu.in/rev. (0.16 to 2.00 cm3/rev). The standard mounting flange is as detailed on the installation drawing and porting is any combination of rear, front or side as defined in the Ordering Example.

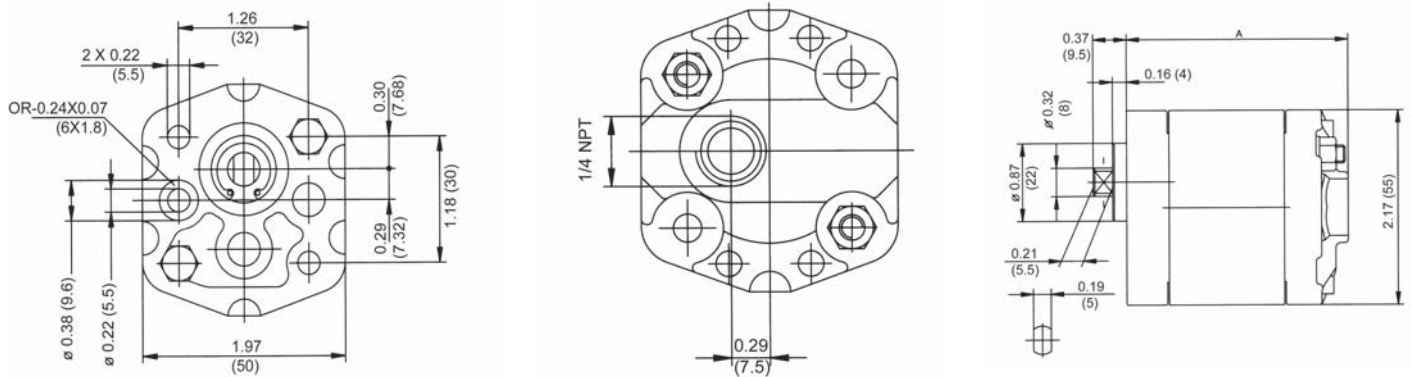


Model	Displacement		Pressure		Speed RPM		Weight	
	cu.in/rev	cm3/rev	Rated	Peak	Rated	Max	Lbs.	Kg
GP-F0-016	0.009	0.16	2750	3335	2000	7000	0.82	0.37
GP-F0-025	0.015	0.25	2750	3335	2000	7000	0.84	0.38
GP-F0-038	0.023	0.38	2750	3335	2000	7000	0.85	0.38
GP-F0-050	0.030	0.50	2750	3335	2000	7000	0.87	0.39
*GP-F0-070	0.043	0.70	2750	3335	2000	7000	0.90	0.40
GP-F0-075	0.045	0.75	2750	3335	2000	7000	0.91	0.41

Model	Displacement		Pressure		Speed RPM		Weight	
	cu.in/rev	cm3/rev	Rated	Peak	Rated	Max	Lbs.	Kg
*GP-F0-084	0.051	0.84	2750	3335	2000	6000	0.91	0.41
GP-F0-100	0.060	1.00	2750	3335	2000	6000	0.92	0.42
GP-F0-125	0.080	1.25	2750	3335	2000	5000	1.00	0.45
GP-F0-150	0.090	1.50	2750	3335	2000	4000	1.04	0.47
GP-F0-175	0.110	1.75	2750	3335	2000	4000	1.08	0.49
GP-F0-200	0.120	2.00	2750	3335	2000	3500	1.13	0.51

## Installation Data



Model	A		Model	A	
	Millimeters	Inches		Millimeters	Inches
GP-F0-016	58.5	2.30	GP-F0-084	64.8	2.55
GP-F0-025	59.0	2.32	GP-F0-100	66.0	2.60
GP-F0-038	60.3	2.37	GP-F0-125	68.5	2.69
GP-F0-050	61.0	2.40	GP-F0-150	70.5	2.77
GP-F0-070	63.0	2.48	GP-F0-175	73.0	2.87
GP-F0-075	63.5	2.50	GP-F0-200	75.5	2.97

## Ordering Information

**GP**

Aluminum  
Gear Pump

-

**F0**

High  
Pressure  
Series

-

**016**

Displacement  
cm3/rev  
(see chart)  
016/025/038  
050/\*070/075/\*084  
100/125/150/175/200

-

**T**

Drive  
Shaft  
T-Flat Tang

-

**C**

Rotation  
Direction  
C-Clockwise  
A-Counter  
Clockwise  
(viewed from  
shaft end)

-

**1**

Port Options  
Omit-Standard (see drawing)  
1-1/4 NPT Side Ports  
\*2-Bi-directional Rotation  
\*3-Free Running  
(Reduced Eff.)  
\* Special order only  
Minimums may apply

# Hydraulic Gear Pump Model GP-F1

## Technical Data

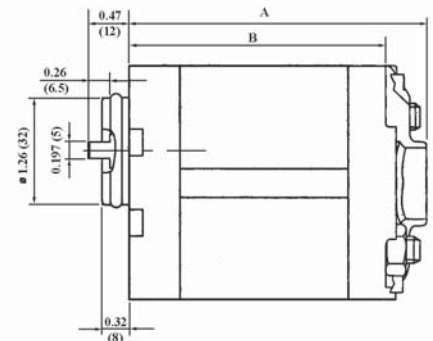
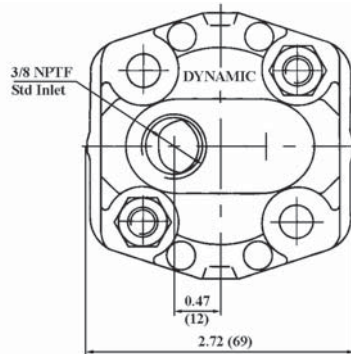
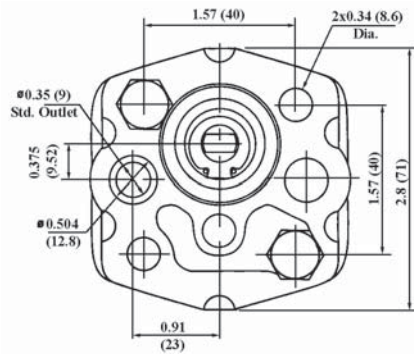
Model GP-F1 is an all aluminium construction, high pressure Hydraulic Gear Pump with 14 displacement sizes from 0.05 to 0.48 cu.in/rev. (0.80 to 8.0 cm3/rev). The standard mounting flange is as detailed on the installation drawing and porting is any combination of rear, front or side as defined in the Ordering Example. The drive shaft options include flat tang or tapered keyed.



Model	Displacement		Pressure		Speed RPM		Weight	
	cu.in/rev	cm3/rev	Rated	Peak	Rated	Max	Lbs.	Kg
*GP-F1-08	0.05	0.80	2900	3626	2000	6000	1.65	0.75
GP-F1-11	0.06	1.1	2900	3626	2000	6000	1.69	0.77
GP-F1-13	0.07	1.3	2900	3626	2000	6000	1.73	0.79
GP-F1-16	0.09	1.6	2900	3626	2000	6000	1.76	0.80
GP-F1-21	0.12	2.1	2900	3626	2000	6000	1.80	0.82
GP-F1-27	0.16	2.7	2900	3626	2000	6000	1.87	0.85
GP-F1-32	0.19	3.2	2900	3626	2000	5000	1.91	0.87

Model	Displacement		Pressure		Speed RPM		Weight	
	cu.in/rev	cm3/rev	Rated	Peak	Rated	Max	Lbs.	Kg
GP-F1-37	0.22	3.7	2900	3626	2000	4500	1.98	0.90
GP-F1-42	0.25	4.2	2900	3626	2000	4000	2.02	0.92
GP-F1-48	0.29	4.8	2320	2900	2000	3500	2.09	0.95
GP-F1-58	0.35	5.8	2320	2900	2000	2900	2.20	1.00
*GP-F1-60	0.36	6.0	2320	2900	2000	2750	2.25	1.02
*GP-F1-70	0.43	7.0	2320	2900	2000	2500	2.34	1.06
GP-F1-80	0.48	8.0	2320	2900	2000	2100	2.42	1.10

## Installation Data



Model	A		B		Model	A		B	
	Millimeters	Inches	Millimeters	Inches		Millimeters	Inches	Millimeters	Inches
*GP-F1-08	73	2.87	61	2.40	GP-F1-32	82	3.23	70	2.76
GP-F1-11	74	2.91	62	2.44	GP-F1-37	84	3.31	72	2.83
GP-F1-13	75	2.95	63	2.48	GP-F1-42	86	3.39	74	2.91
GP-F1-16	76	2.99	64	2.52	GP-F1-48	88	3.46	76	2.99
GP-F1-18	77	3.03	65	2.56	GP-F1-58	92	3.62	80	3.15
GP-F1-21	78	3.07	66	2.60	*GP-F1-60	93	3.66	81	3.18
GP-F1-27	80	3.15	68	2.68	*GP-F1-70	96	3.77	84	3.30
					GP-F1-80	100	3.94	88	3.46

## Ordering Information

<b>GP</b>	-	<b>F1</b>	-	<b>16</b>	-	<b>T</b>	-	<b>C</b>	-	<b>1</b>
Aluminum Gear Pump		High Pressure Series		Displacement cm3/rev (see chart) *08/11/13/16/18 21/27/32/37/42 48/58/*60/*70 *80		Drive Shaft T-Flat Tang Z-Taper		Rotation Direction C-Clockwise A-Counter Clockwise (viewed from drive shaft end)		Port Options Omit-Standard (see drawing) 1- 3/8 NPT Side Ports <b>Other Option</b> *3- Free Running (reduced Eff.)